


EKTK seminar 25.08.2015



4.4. Näited õhupidava kihi loomisest praktikas

Jaanus Hallik
Building numerics OÜ | TÜ EETLabor

Building numerics OÜ | jaanus@buildingnumerics.ee | +372 5021841

EKTK seminar 25.08.2015

Põlva passiivmaja

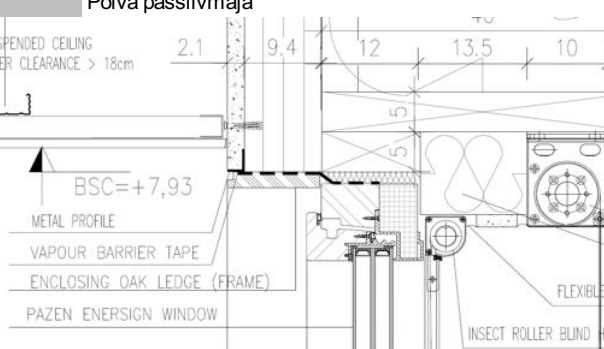


Õhupidava kihi loomine algas projekti faasis

Building numerics OÜ | jaanus@buildingnumerics.ee | +372 5021841

EKTK seminar 25.08.2015

Põlva passiivmaja



DEPENDENT CEILING
CLEARANCE > 18cm

2.1 9.4 12 13.5 10

BSC=+7,93

METAL PROFILE
VAPOUR BARRIER TAPE
ENCLOSING OAK LEDGE (FRAME)
PAZEN ENERSIGN WINDOW

FLEXIBLE
INSECT ROLLER BLIND

Õhupidava kihi loomine algas projekti faasis

Building numerics OÜ | jaanus@buildingnumerics.ee | +372 5021841

EKTK seminar 25.08.2015

Põlva passiivmaja



Õhupidava kihi loomine ehitusplatsil

Building numerics OÜ | jaanus@buildingnumerics.ee | +372 5021841

EKTK seminar 25.08.2015

Põlva passiivmaja

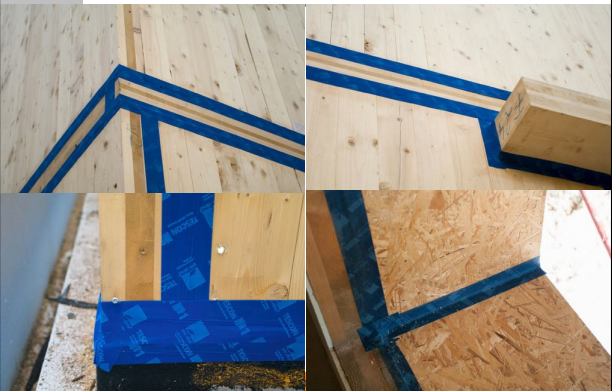
Õhupidava kihi loomine ehitusplatsil



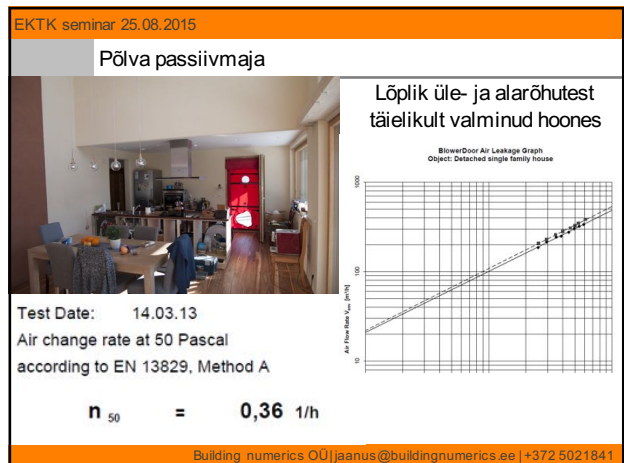
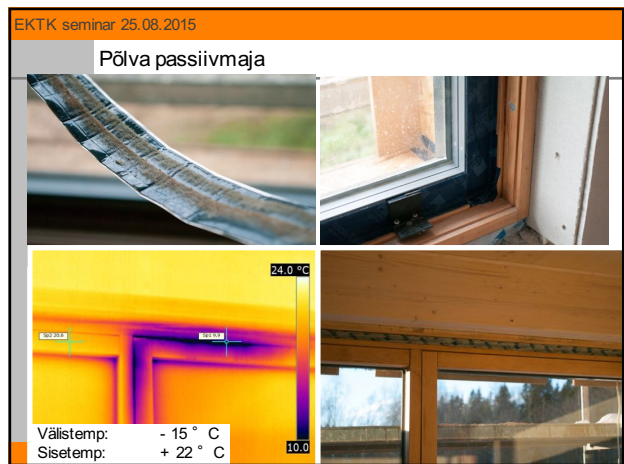
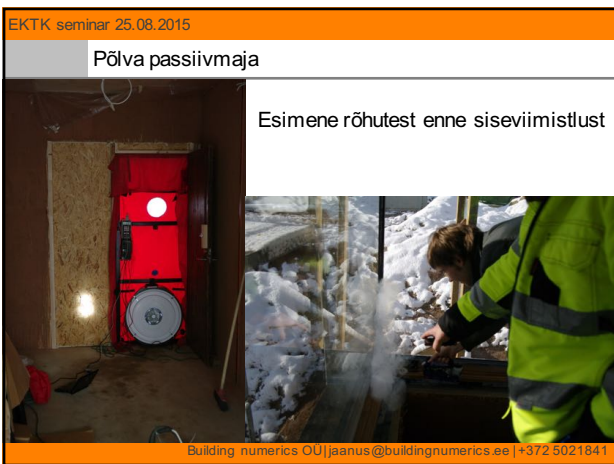
Building numerics OÜ | jaanus@buildingnumerics.ee | +372 5021841

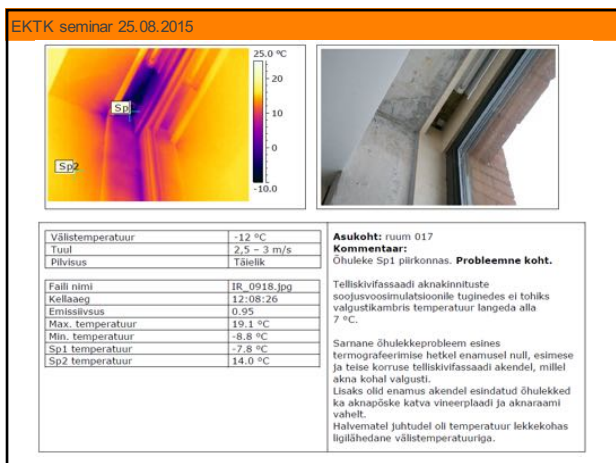
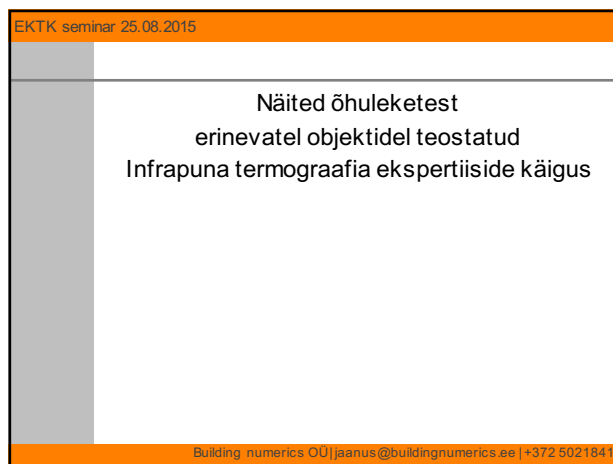
EKTK seminar 25.08.2015

Põlva passiivmaja

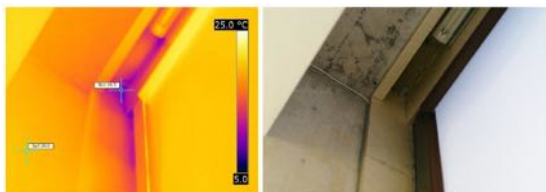


Building numerics OÜ | jaanus@buildingnumerics.ee | +372 5021841





EKTK seminar 25.08.2015

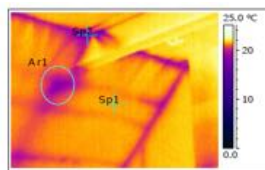


Faili nimi	IR_2252	Sp1 temp	10,5 °C
Kellaeg	09:57	Sp2 temp	20,0 °C
Min temp	8,4 °C		
Maks temp	23,0 °C		

Kommentaar:	Välisõhu temperatuur	-7 - -6 °C
Probleemid puuduvad.	Tuul	2 - 3 m/s
	Õhuniiskus	43%
	Pihvius	Täielik pihvius; 100%
	Siseõhu temperatuur	20 - 22 °C

Building numerics OU|jaanus@buildingnumerics.ee |+372 5021841

EKTK seminar 25.08.2015



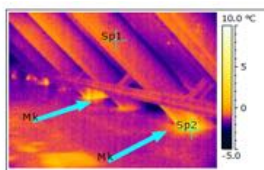
File name	IR_1938.jpg
Image Time	11:04:51
Emissivity	0.95
Max. Temperature	22.8 °C
Min. Temperature	14.8 °C
Sp1 Temperature	21.3 °C
Sp2 Temperature	16.8 °C

Location: Kitchen area
Comments:
 There are minor air leaks near the beams (shown with arrows) and cool air or moisture is behind the wall - inside the insulation layer.

The air leaks near the kitchen area might contribute to the frosting in the attic, because in the kitchen the moisture production is higher.

Building numerics OU|jaanus@buildingnumerics.ee |+372 5021841

EKTK seminar 25.08.2015

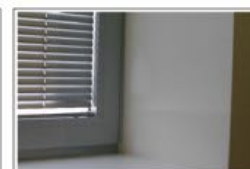
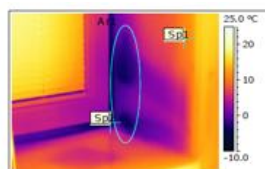


File name	IR_1953.jpg
Image Time	11:56:14
Emissivity	0.95
Max. Temperature	5.6 °C
Min. Temperature	-3.6 °C
Sp1 Temperature	-1.1 °C
Sp2 Temperature	2.1 °C

Location: Attic
Comments:
 Air leaks near the roof beams.

Building numerics OU|jaanus@buildingnumerics.ee |+372 5021841

EKTK seminar 25.08.2015



Välisõhustemperatuur	-20 °C
Tuul	1 m/s
Pihvius	Väga kõrge
Faili nimi	IR_1448.jpg
Kellaeg	10:11:40
Emissivsus	0.98
Max. temperatuur	18.6 °C
Min. temperatuur	-4.9 °C
Sp1 temperatuur	10.4 °C
Sp2 temperatuur	-4.2 °C

Asukoht: ruum 003
Kommentaari:
 Külma välisõhku on pääsenud seinakonstruktsiooni sisse ja jahutab siseviimistlustel kasutatud kipsplaate. Tõsisest probleemist annab märku ka tavafotol nähtav jäätumine aknapösel. Infrapunafotol on need piirkonnad ümbritsetud ringiga.

Building numerics OU|jaanus@buildingnumerics.ee |+372 5021841